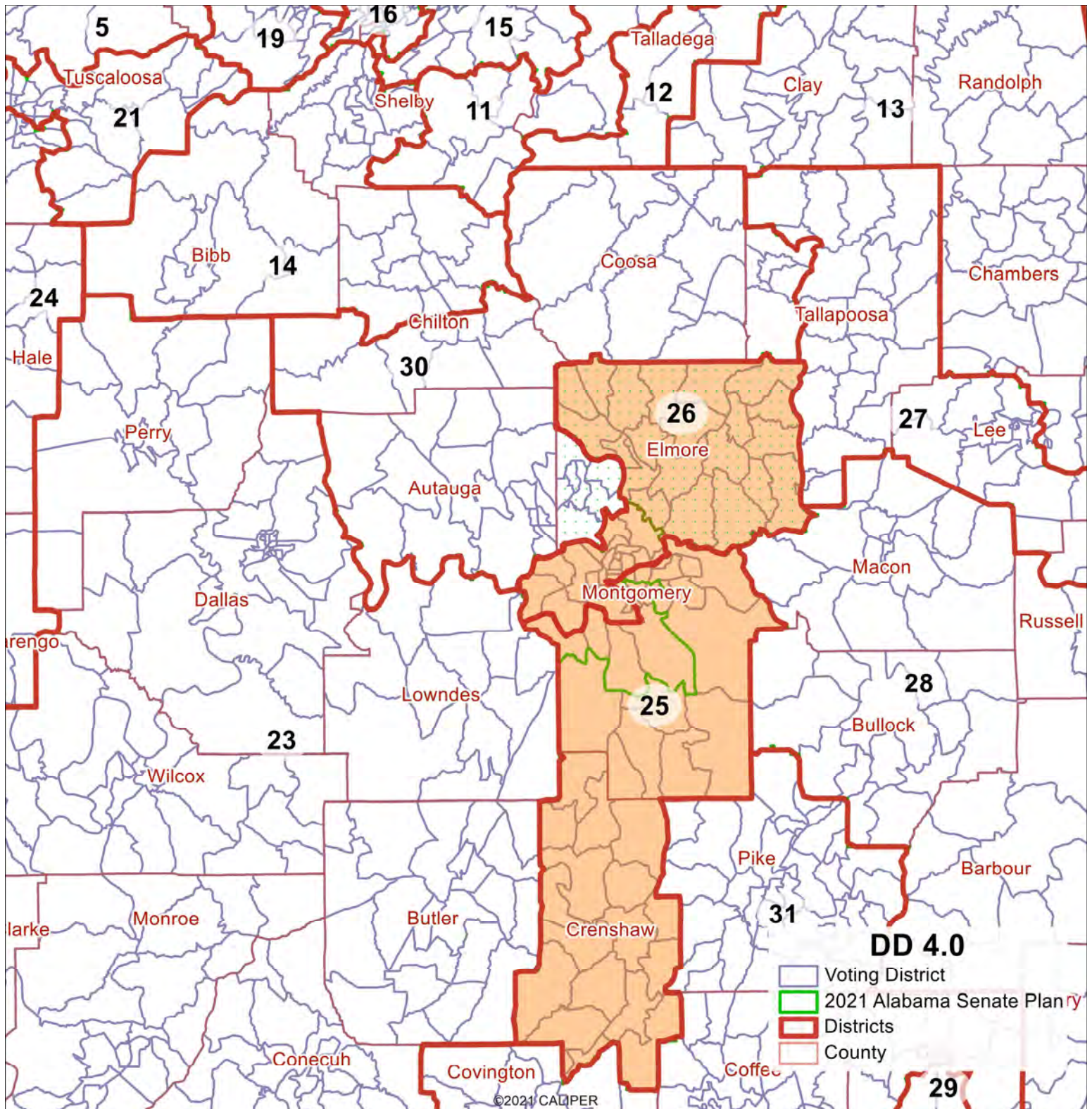


EXHIBIT 10



D.D. Plan 4.0

Plan Characteristics	D.D. Plan 4.0
Maximum Population Deviation	14,313
Contiguous	Yes
Core Retention (% Population in Same District as in Enacted Plan): Statewide	97.8%
County Splits (out of 67 counties)	19
Voting District Splits (out of 1,837 voting districts)	15
Municipality Splits (out of 462 municipalities)	84
Montgomery Split (% Population in District 25 / District 26)	54.7% / 45.3%
Compactness: Reock Score: Statewide	0.41
Compactness: Polsby-Popper Score: Statewide	0.26
Compactness: Population Polygon Score: Statewide	0.68
Compactness: Cut Edges: Statewide	8,871

District Characteristics	District 25	District 26
Total Population	148,126	148,124
Core Retention (compared to Enacted Plan)	63.3%	63.5%
Compactness: Reock Score	0.32	0.40
Compactness: Polsby-Popper Score	0.20	0.21
Compactness: Population Polygon Score	0.66	0.45
Black Voting Age Population	46.4%	48.6%

Election Performance Analysis – The percentage below is the margin of victory or defeat of the Black-preferred candidate (equal to the vote count for the Black-preferred candidate minus the vote count for the other top-vote getting candidate, divided by the total number of votes of those two candidates, excluding third-party or other votes). The average is a simple average (equally weighted) of all unique election contests without duplicates.

Election Contest	District 25		District 26	
	% Votes for BPC	Margin of Victory (or Defeat)	% Votes for BPC	Margin of Victory (or Defeat)
Eleven Biracial Elections				
2014 Auditor	43.3%	-13.3%	45.6%	-8.7%
2014 Lt. Governor	44.1%	-11.8%	54.8%	9.7%
2014 Secretary of State	43.1%	-13.8%	54.5%	8.9%
2018 Auditor	53.8%	7.6%	56.9%	13.9%
2018 Lt. Governor	51.6%	3.1%	55.9%	11.8%
2018 Pub. Serv. Commission (Place 1)	52.9%	5.9%	56.9%	13.9%
2022 Attorney General	47.9%	-4.2%	48.3%	-3.3%
2022 Governor	45.3%	-9.4%	47.5%	-5.1%
2022 Secretary of State	48.3%	-3.3%	48.9%	-2.2%
2022 Supreme Court Assoc. Justice	48.6%	-2.8%	48.8%	-2.4%
2022 U.S. Senate	47.2%	-5.7%	48.6%	-2.8%
Subtotal – Average	47.8%	-4.3%	51.5%	3.1%
Subtotal – Contests Won	3 of 11	-	5 of 11	-
Additional Elections				
2017 U.S. Senate	63.1%	26.2%	65.2%	30.4%
2018 Attorney General	54.9%	9.8%	58.3%	16.6%
2018 Governor	52.0%	3.9%	55.1%	10.2%
2018 Secretary of State	51.7%	3.5%	56.0%	12.0%
2020 President	53.4%	6.8%	56.4%	12.7%
2020 U.S. Senate	55.3%	10.6%	57.9%	15.8%
Total – Average	50.4%	0.8%	53.9%	7.7%
Total – Contests Won	9 of 17	-	11 of 17	-